



# School Brochure 2023/24

# Welcome to Eastbury Primary School

At Eastbury Primary School we aim to provide a wonderful environment for all of our children to succeed and thrive in. We are a warm, welcoming community set in beautiful buildings and grounds which really enhance our children's learning.

We believe that every child should achieve, even exceed their potential whilst feeling safe and happy every day. Along with our fabulous, modern buildings, we boast an excellent and dedicated team of teachers and support staff who strive every day to get the very best from the children in our care.

Please read through our brochure and learn a little more about us. Better still, if you are a potential parent or member of our community, then please do come and meet us. Myself, or a member of the team would be only too happy to show you around.



Mrs Lisa Shepherd  
Headteacher





eastbury  
primary  
school  
*Succeeding together*

# Our School Values

At Eastbury, we strive to model the following school values and British Values:



We promote these values through our learning, our play, our extra-curricular activities and assemblies to ensure that all children understand and follow these values everyday at school.



## Key Information

Eastbury Primary School is a 4-form primary school with a nursery.

Each year group has 120 children, made up of four classes of 30. Our nursery has a total of 104 places: 52 in the morning session and 52 in the afternoon session.

Eastbury is an academy converter school and the lead primary school under the management of Partnership Learning, a local multi- academy trust who also manage other primary and secondary schools in Barking & Dagenham including:

Primary	Secondary	All-Through	Special
Eastbury Primary	Greatfields School	George Mitchell School	Riverside Bridge School
James Campbell	Hornchurch High School	Sydney Russell School	
Harrow Lodge	Riverside Secondary School		
Riverside Primary	Southchurch High School		
Thames View Junior			



Partnership Learning





### Times of the Day

The school day starts at 8:45am for all pupils (except nursery). Children are brought in to school and collected from the main playground, except for children in Reception who are brought in and collected through the main school entrance.

	Reception	Years 1 & 2	Years 3 & 4	Years 5 & 6
<b>School Start</b>	8:30am	8:45am	8:45am	8:45am
<b>Morning Break</b>	N/A*	10:40 – 10:55 (+ year 3)	11:00 – 11:15	11:00 – 11:15
<b>Lunch</b>	11:45 – 12:45	12:00 – 1:00	12:15 – 1:15	12:45 – 1:45
<b>Afternoon Break</b>	N/A*	N/A	N/A	N/A
<b>School Finish</b>	3:05pm	3:15pm	3:15pm	3:15pm

\*Reception do not have a specific time for a morning or afternoon break as they actively learn through play during class time.

The times for our Nursery are as follows:

	Morning	Afternoon
<b>Start Time</b>	8:30am	12:15pm
<b>Finish Time</b>	11:30am	3:15pm

### Lunch Time

At lunch time, children can either bring a packed lunch from home, buy a hot meal provided by the school or be taken home by a parent or guardian to have lunch. School meals are £2.10 per day and are paid for with ParentPay, an online service that manages all lunch payments. **We do not accept cash for school meals.** Please speak to the school office for more information.







## Healthy Lunches

We promote healthy eating in school and our school lunches reflect this. If you choose to send your child in with a packed lunch, please ensure that it consists of healthy foods. Please avoid chocolates, fizzy drinks and other high sugar foods as these will have a negative impact on a child's learning through the afternoon.



### Absence

Should your child be absent from school for any reason, you must inform the school office directly before 9:30am on the first day of their absence. Please either call or visit the school office or send us an e-mail including your child's name, class and the reason for their absence.

We encourage all parents to make medical appointments outside of school hours. However, if an appointment takes place during the school day, please bring a copy of an appointment letter or card to the school office.

### Medicines

If your child has been prescribed medication that needs to be taken whilst they are at school, our Lead First Aider will be able to administer this. You will need to complete the relevant paperwork, available from our school office.

We are not allowed to give children paracetamol, calpol or any other over-the-counter medicine. In these instances, if you feel your child needs this medication during the day, either you or another responsible adult will need to visit the school and administer the medication yourself.





# Term Dates

Our term dates for this academic year are as follows:

Other School Closures See below:

**EASTBURY PRIMARY SCHOOL TERMS AND HOLIDAYS 2023/2024**

5<sup>th</sup> September 2023 = First Day of Autumn Term
19<sup>th</sup> July 2024 = Last Day of Summer Term

SEPTEMBER 2023							OCTOBER 2023							NOVEMBER 2023							DECEMBER 2023						
M	T	W	T	F	S	S	M	T	W	T	F	S	S	M	T	W	T	F	S	S	M	T	W	T	F	S	S
				1	2	3							1			1	2	3	4	5					1	2	3
4	5	6	7	8	9	10	2	3	4	5	6	7	8	6	7	8	9	10	11	12	4	5	6	7	8	9	10
11	12	13	14	15	16	17	9	10	11	12	13	14	15	13	14	15	16	17	18	19	11	12	13	14	15	16	17
18	19	20	21	22	23	24	16	17	18	19	20	21	22	20	21	22	23	24	25	26	18	19	20	21	22	23	24
25	26	27	28	29	30		23	24	25	26	27	28	29	27	28	29	30				25	26	27	28	29	30	31
							30	31																			

JANUARY 2024							FEBRUARY 2024							MARCH 2024							APRIL 2024						
M	T	W	T	F	S	S	M	T	W	T	F	S	S	M	T	W	T	F	S	S	M	T	W	T	F	S	S
1	2	3	4	5	6	7				1	2	3	4					1	2	3	1	2	3	4	5	6	7
8	9	10	11	12	13	14	5	6	7	8	9	10	11	4	5	6	7	8	9	10	8	9	10	11	12	13	14
15	16	17	18	19	20	21	12	13	14	15	16	17	18	11	12	13	14	15	16	17	15	16	17	18	19	20	21
22	23	24	25	26	27	28	19	20	21	22	23	24	25	18	19	20	21	22	23	24	22	23	24	25	26	27	28
29	30	31					26	27	28	29				25	26	27	28	29	30	31	29	30					

MAY 2024							JUNE 2024							JULY 2024							AUGUST 2024						
M	T	W	T	F	S	S	M	T	W	T	F	S	S	M	T	W	T	F	S	S	M	T	W	T	F	S	S
			1	2	3	4	5					1	2	1	2	3	4	5	6	7				1	2	3	4
6	7	8	9	10	11	12	3	4	5	6	7	8	9	8	9	10	11	12	13	14	5	6	7	8	9	10	11
13	14	15	16	17	18	19	10	11	12	13	14	15	16	15	16	17	18	19	20	21	12	13	14	15	16	17	18
20	21	22	23	24	25	26	17	18	19	20	21	22	23	22	23	24	25	26	27	28	19	20	21	22	23	24	25
27	28	29	30	31			24	25	26	27	28	29	30	29	30	31					26	27	28	29	30	31	

School Holidays
  Inset Days
  Bank holidays

# Uniform

	Boys	Girls	Optional
Nursery	Black/grey jogging bottoms White polo shirt V-Neck sweatshirt Black school shoes/trainers	Black/grey jogging bottoms White polo shirt V-Neck sweatshirt Black school shoes/trainers	
Reception & KS1	Black/dark grey trousers White polo shirt V-Neck sweatshirt Black school shoes/trainers	Black/dark grey trousers Black/dark grey knee length skirt White polo shirt/blouse Any colour summer dress V-Neck sweatshirt or cardigan Black school shoes/trainers	Children may wear ties if they wish to, but it is not compulsory for these year groups
KS2	Black/dark grey trousers Black school shoes/trainers White polo shirt/shirt V-Neck sweatshirt or cardigan School tie	Black/dark grey trousers Black/dark grey knee length skirt White polo shirt/blouse Any colour summer dress V-Neck sweatshirt or cardigan Black school shoes/trainers School tie	Blazer optional for Year 5 & 6 boys and girls
PE Kit whole school	Plain white t-shirt Black shorts Plimsolls for indoor PE trainers for outdoor PE	Plain white t-shirt Black shorts Plimsolls for indoor PE Trainers for outdoor PE	Grey/black jogging bottoms and grey/black sweatshirt for outdoor PE during the colder months

Eastbury blazers, jumpers, ties and fleece lined waterproof jackets are available from Premier School wear in Dagenham for all age groups, as well as our own school book bag.

Polo shirts, shirts, blouses, skirts, trousers, and summer dresses can be purchased from local supermarkets and some retail clothing shops.

Please ensure you support us by encouraging your child to observe the following rules:

- No necklaces, bracelets, rings or 'dangling'/hooped earrings. Plain studs are allowed but must be removed for PE lessons.
- Only black school shoes or plain black trainers to be worn. No heels, sandals, brightly coloured trainers or exposed-toed shoes (for safety).
- No 'razor lines', mohawks or colours in hair.
- No hoodies permitted.







# Who's Who?

Here is a brief list of key staff members in the school:

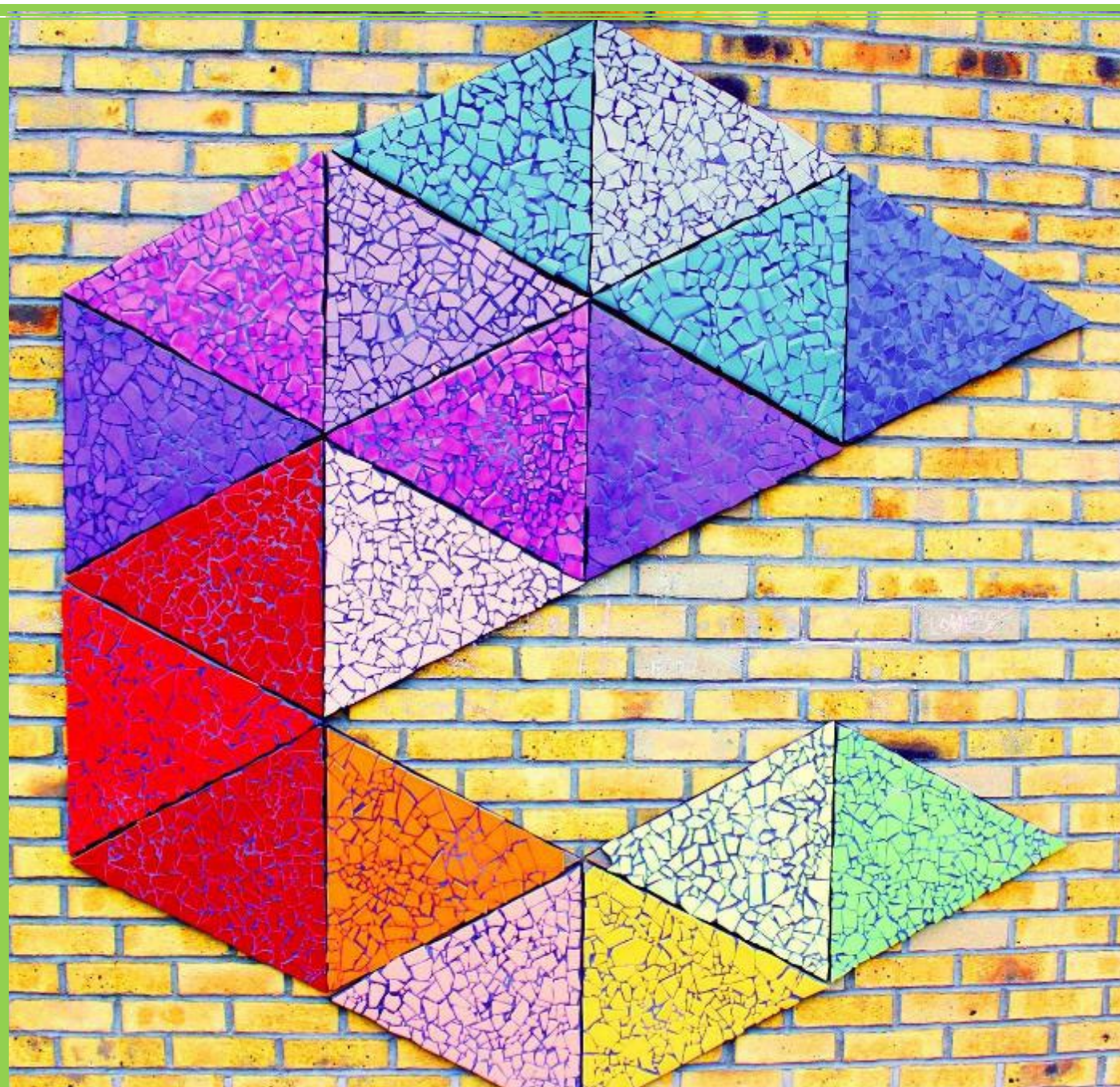
Name	Role
Lisa Shepherd	Headteacher
Claire Trench	Deputy Headteacher
Jo Hodges	Assistant Headteacher
Khaled Subhan	Assistant Headteacher
Jen Ferguson	Assistant Headteacher
Grace Abwooli	Assistant Headteacher
Jacqui Sanders	School Business Manager
Tasnim Kamaly	Family Support Worker
Satvir Kaur	SENCO

Should you wish to make an appointment to meet with any of our Senior Leadership Team, your child's class teacher or our Family Support Officer, please call our school office who will be happy to assist you.

Our Senior Leadership Team are often found on the playground at the start and end of every school day should you wish to speak with them.

## Members of the Local Governing Board:

Name	Role
Mr Roger Leighton	Trust Representative: CEO Partnership Learning
Mrs Nicola Masters	Trust appointed Chair
Mr A Roberts	Trust appointed Governor
Mrs L Shepherd	Headteacher
Mr Z Ahmad MBE	Parent Governor
Mrs I Markova	Trust appointed Staff Governor
Mrs Harjinda Kaur	Staff Governor



At Eastbury we run Breakfast and after school clubs.

Breakfast club starts at 7:45am – 8:30am.

After school 'Eagles' club takes place between 3pm – 6pm. Parents and carers can sign up for this service for their children. Please see school office.

After school clubs take place between 3:30pm – 4:30pm. These are offered termly and are varied each term. Currently we offer homework club, sports club and karate club.

Please contact the school office for more details on any of our clubs.





# Early Years

# Foundation Stage

The Early Years Foundation Stage is a two-year phase, which starts in Nursery and ends in Reception. There are seven key learning areas taken from 'Development Matters'. These are:

- ◇ Personal, Social and Emotional Development
- ◇ Communication and Language
- ◇ Physical Development
- ◇ Literacy
- ◇ Mathematics
- ◇ Understanding the World
- ◇ Expressive Arts and Design



Children experience learning which is tailored to meet their needs through whole-class, teacher-led, small group and one to-one sessions. Structured and open-ended play opportunities are also available both inside and outside the classroom.





eastbury  
primary  
school  
Succeeding Together

# Curriculum

At Eastbury, children are taught through formal lessons, which helps to build up their knowledge and confidence in all subject areas. We provide children with engaging activities which ensure they will achieve to the best of their ability.

Eastbury Primary School

## CURRICULUM INTENT

**E**ducational experiences outside the classroom

**A**spirational and challenging curriculum

**S**peech and language development

**T**ogether we celebrate inclusion and diversity

**B**SL supports communication and learning

**U**sing skills and remembering knowledge

**R**eading for understanding and pleasure

**Y**our children are at the heart of the curriculum



## Religious Education (R.E) assemblies:

Year group	Assembly	Term
Nursery	Christmas sing along	Autumn 2
Reception	Christmas Assembly	Autumn 2
Year 1	St George's Day Assembly	Summer 1
Year 2	Eid Assembly	Summer 2
Year 3	Diwali Assembly	Autumn 2
Year 4	Chinese New Year Assembly	Spring 1
Year 5	Easter Assembly	Spring 2
Year 6	Year 6 Leavers performance	Summer 2

## SATs

All state primary pupils in England are tested at the end of Key Stage 2 through the use of Statutory Assessment Tests (SATs). SATs measure children's educational achievement in years 2 and 6, it measures the attainment of children and the progress they make.

Year 6 children take their SATs tests on set dates in mid-May. Results are then given to parents by the end of the summer term. Children are tested in maths, reading, writing, spelling, punctuation and grammar.

Parental support is an essential part of the pupils' development. We ask that all parents ensure their child's homework is completed regularly and to use any spare time to extend their learning using their revision guides or the many online resources available on our school website.

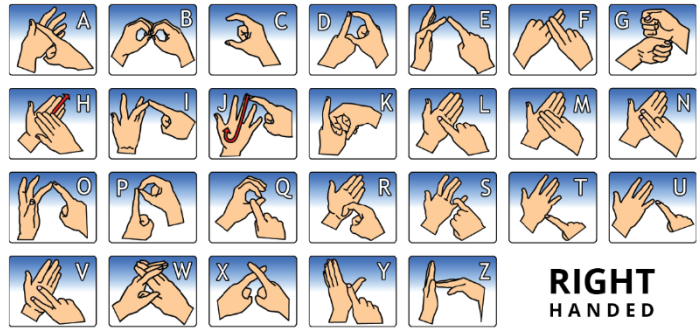


## Additionally Resourced Provision (ARP) for Deaf Children

Eastbury Primary School has an Additionally Resourced Provision (ARP) for Deaf Children. We offer highly qualified and experienced staff to support deaf children throughout the school from Nursery to Year 6.

We have a Specialist Teacher of the Deaf (ToD) and Education and Communication Support Workers (ECSWs) who support children using a Child Centred Total Communication approach. We work both in mainstream classes and lessons and also offer specialist withdrawal lessons and small group work, including reverse inclusion groups with hearing children. We use British Sign Language (BSL) and Signed Supported English (SSE) across the whole school with many staff who are trained or training to use sign language.

## BRITISH SIGN LANGUAGE - FINGERSPELLING







eastbury  
primary  
school  
Succeeding Together

# Our Inclusion Philosophy

At Eastbury Primary School, we believe in inclusion to help ALL pupils to learn. We respect the diverse experiences of our pupils, families and staff. We value alternative teaching methods to add to the quality of learning for all pupils. We appreciate the social, spiritual, cultural and linguistic importance of our learners. We promote and value sign language using both BSL (British Sign Language) and SSE (Signed Supported English) to support all pupils through the learning process, regardless if they have a hearing loss or not. We respect all cultures and languages, but we expect our pupils to be comfortable and confident in the spoken and written language of English in its many forms.

## Expectations of Pupils

We have high expectations of all of our pupils. Our SEN students have aspirational targets in line with their peers. In the upper quartile of expectations, we expect SEN students to make at least one sub level of progress per term to bridge any gaps between them and their peers. In the cases where this is not achieved, further specialist advice and intervention will be sought to develop individualised plans to help pupils reach their true academic potential.





eastbury  
primary  
school  
Succeeding together

## How We Can Achieve This

We achieve these expectations by offering the following services:

- ◇ Offering specialist speech and language programmes and interventions facilitated by trained and qualified staff.
- ◇ Additional reading support and interventions specific pupils.
- ◇ Implementing appropriate differentiation to planning.
- ◇ Small group and specialist mathematics intervention for pupils who have been identified as needing support.
- ◇ In class, individual support programmes.
- ◇ We provide a nurturing environment for groups, classes and pupils who need support for to improve their social skills and develop their life skills.
- ◇ General and specific family support programmes, interventions and classes for families to access, facilitated by trained and supportive staff.
- ◇ An inclusive physical education program to support and develop fine motor skills and gross motor skills.
- ◇ We support and enhance pupils' abilities to deal with diversity through our PSHE curriculum.
- ◇ A sensory room to help personalise the provision for specific pupils.

# How You Can Help



- ◇ Homework is used as a challenge and extension of what we have been learning in class, supporting your children in completing their homework regularly can have a hugely positive impact on their learning.
- ◇ Discussion is a great way to clarify understanding and demonstrate knowledge, we encourage you to speak with your children about what they are doing in school and ask questions.
- ◇ It is also important to read with your child every day as well as support them in practising their spellings, handwriting and times tables.
- ◇ Attendance and punctuality are very important for all children. Ensuring your child is at school every day and on time prevents them missing any aspect of their learning.
- ◇ Communication is a key part of our strong relationship with parents. Please ensure that we always have your correct and up-to-date contact details. If any telephone numbers or addresses change, please inform the school office.
- ◇ We hold parent-teacher consultations throughout the year. The meetings help to solidify the relationship between parents and teachers. It allows you to discuss your child's work and progress. Your attendance to these meetings are highly encouraged.



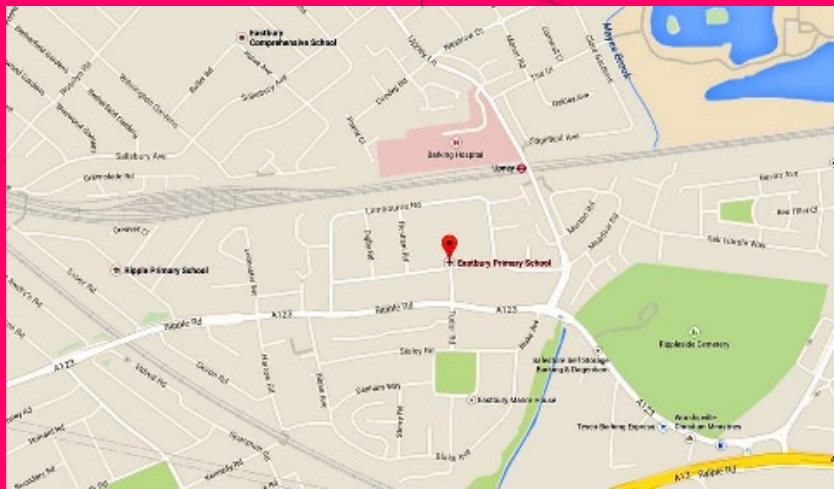




eastbury  
primary  
school  
Succeeding Together

## How to Find Us

Should you need any more information, please do not hesitate to get in t



020 8477 9910



[office@eps.barking-dagenham.sch.uk](mailto:office@eps.barking-dagenham.sch.uk)



[www.eps.barking-dagenham.sch.uk](http://www.eps.barking-dagenham.sch.uk)



@eastburyprimary



[www.facebook.co.uk/eastburyprimary](http://www.facebook.co.uk/eastburyprimary)

